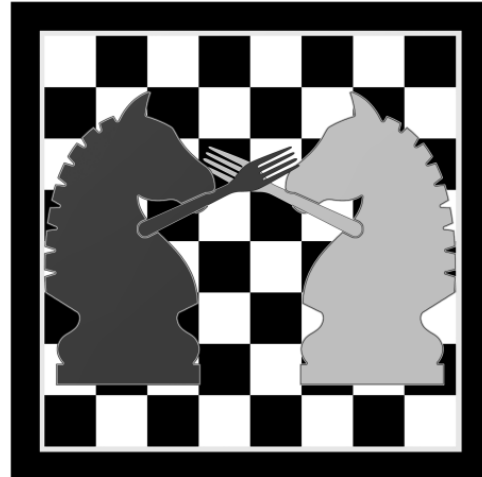
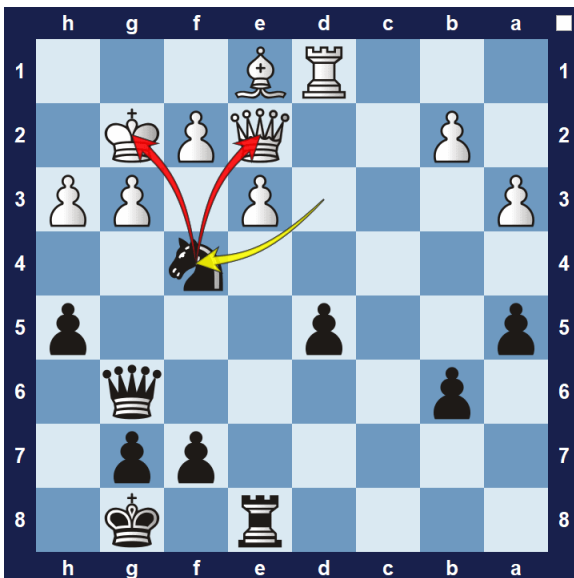


## FORK

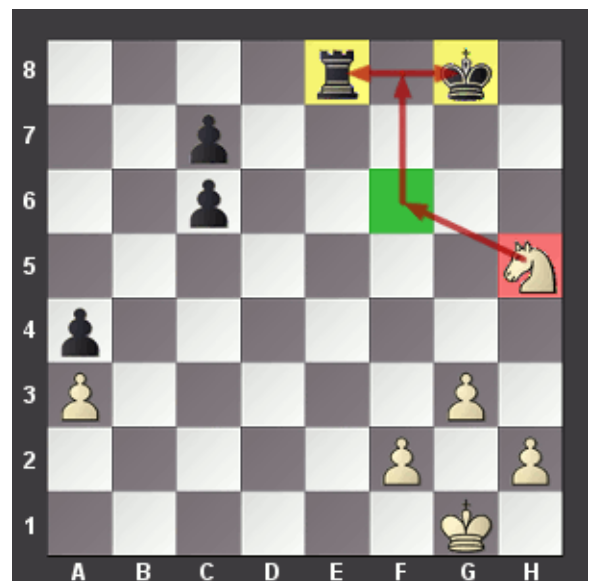
1. A fork is a kind of double attack.
2. Attacks two or more pieces simultaneously
3. Knight – attacks pieces on square of opposite color
4. If King and Queen are on the same color square  
Then they are more susceptible to knight fork



## Example 1



## Example 2



**Problems: white to move and fork in 1 or 2 moves**



**Problems: black to move and fork in 1 or 2 moves**



**Problem: white to move and fork**

