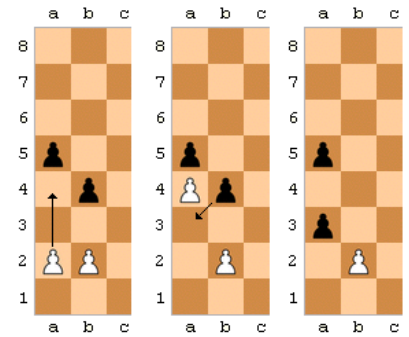


PAWN RULE REMINDERS

- PAWNS NEVER GO BACKWARDS
- A PAWN CAN ONLY MOVE TWO SQUARES ON MOVE 1
- PAWNS CAPTURE DIAGONALLY IN FRONT

EN PASSANT RULE

- The enemy pawn advanced two squares *on the previous move*
- The capturing pawn attacks the square *that the enemy pawn passed over*

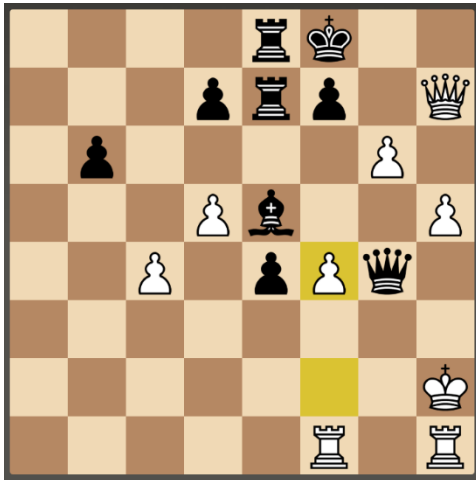


EN PASSANT RULE

1. A pawn is on the 5th rank
2. The enemy pawn moves to the 4th rank
3. The pawn on the 5th rank can capture on the very next move.

FOR ALL PUZZLES – PLAY EN PASSANT FOR CHECKMATE

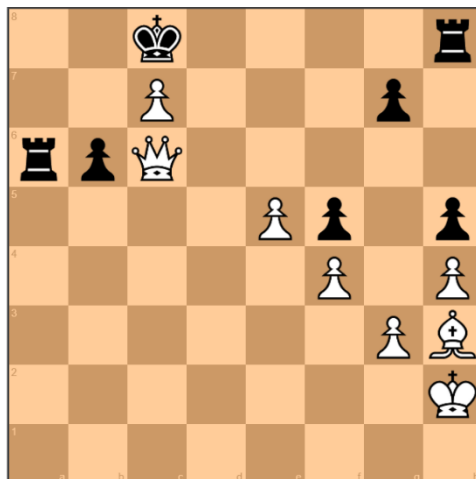
Black to move (white last played f4)



Black to move (white last played f4)



White to move. (Black last played pawn f5)



White to move. (Black last played pawn f5)



White to Move (Black last played pawn f5)



Black to move (white last played f4)



White to move. (Black last played pawn g5)



White to move. (Black last played pawn g5)



White to move. (Black last played pawn g5)



Black to move (white last played f4)

