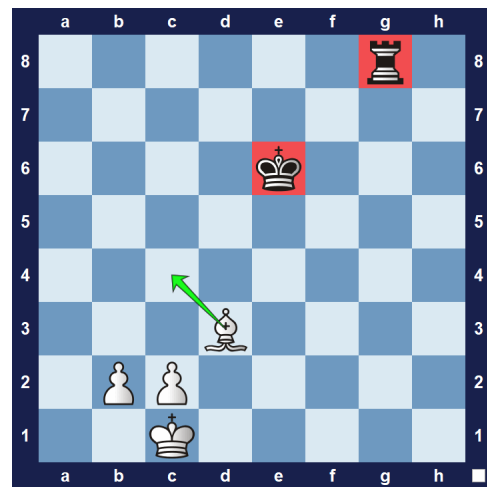
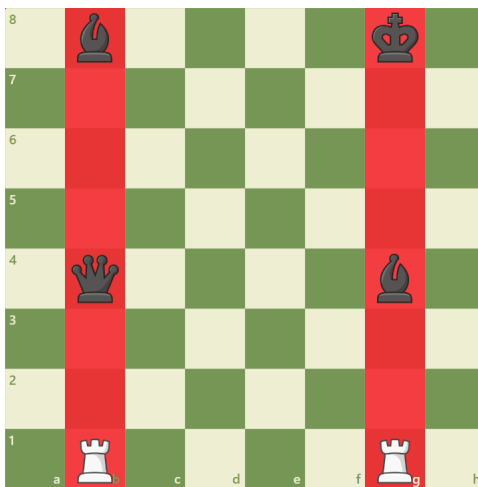


SKEWERS CAN BE EXECUTED BY BISHOPS, QUEENS, OR  
ROOKS

A SKEWER IS LIKE A PIN EXCEPT THAT THE MAJOR PIECE IS  
UNDER DIRECT ATTACK

IN A RELATIVE SKEWER THE MAJOR PIECE CAN BE MOVED

IN AN ABSOLUTE SKEWER, THE THREAT CANNOT BE  
IGNORED BECAUSE OF THE CHECK



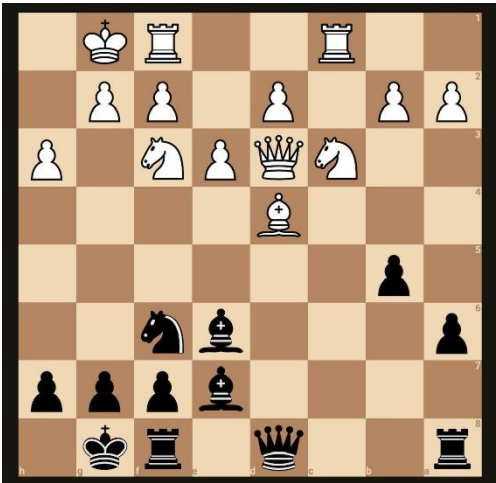
Black to move



What move should black play? \_\_\_\_\_

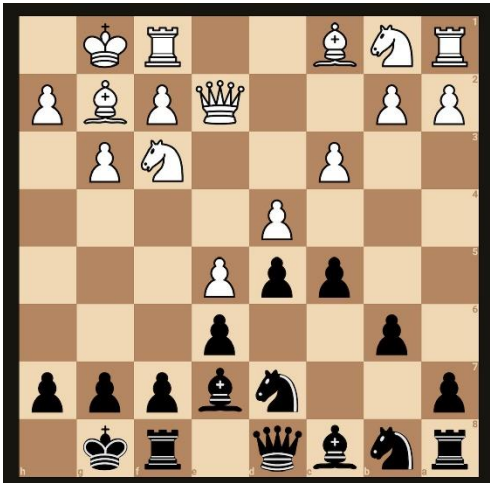
Which white pieces are skewered? \_\_\_\_\_

Black to move:



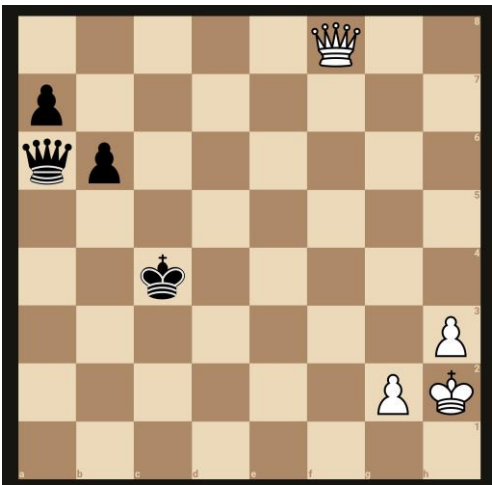
What move should black play? \_\_\_\_\_  
Which white pieces are skewered? \_\_\_\_\_

Black to move:



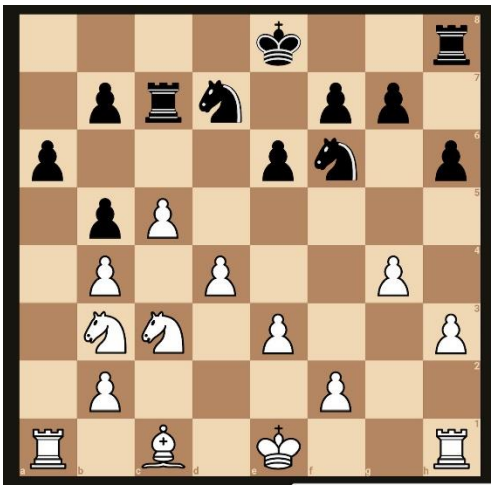
What move should black play? \_\_\_\_\_  
Which white pieces are skewered? \_\_\_\_\_

White to move:



What move should white play? \_\_\_\_\_  
Which white pieces are skewered? \_\_\_\_\_

White to move: skewer in 2 moves



What move should white play?  
1. \_\_\_\_\_ 2. \_\_\_\_\_  
Which white pieces are skewered? \_\_\_\_\_