

ZWISCHENZUG – GERMAN; INTERMEZZO; ITALIAN IN-BETWEEN MOVE

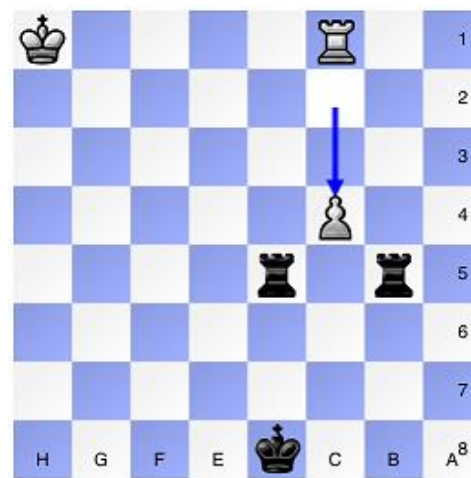
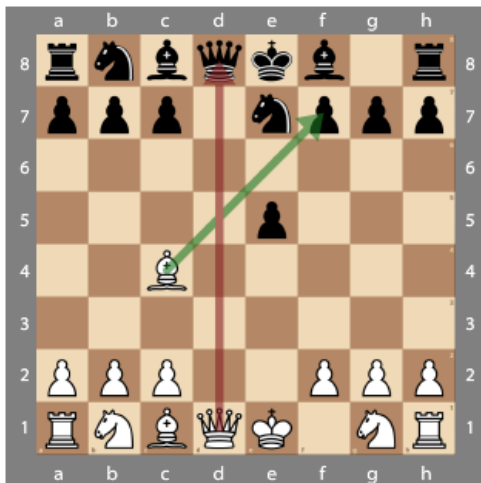
OFFERS SPACE AND TIME TO REDIRECT THE ATTACK

IS OFTEN A CHECK

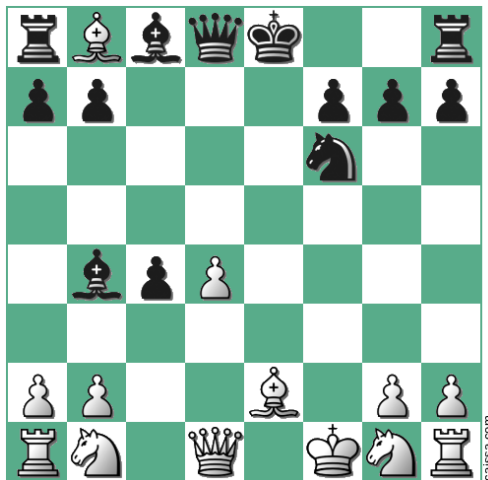
OFTEN PRECLUDES DIRECT EXCHANGE

IN THE FIRST EXAMPLE BELOW, WHITE DOESN'T IMMEDIATELY CAPTURE THE QUEEN, BUT FIRST DELIVERS CHECK TO THE KING

IN THE SECOND EXAMPLE; BLACK USES A CHECK TO KEEP BOTH ROOKS



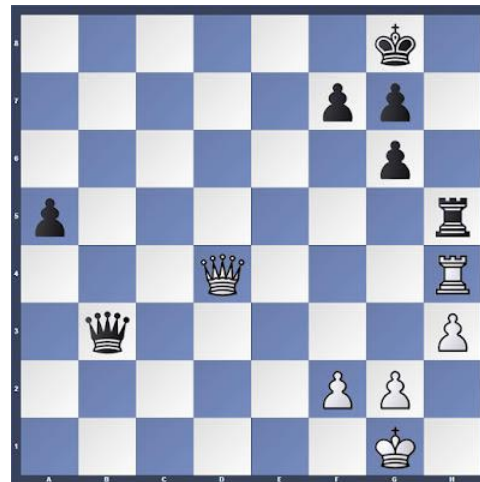
Black to move



What move should black play? _____

Can white save the bishop? _____

Black to move



Black's plan is to capture the R make a Q

Will White win, lose, or draw? _____

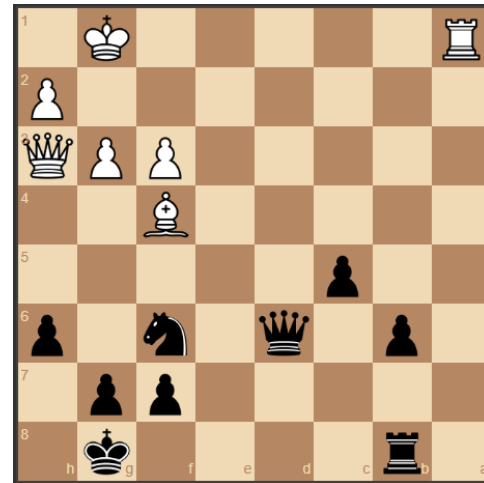
Black to move:



What move should black play? _____

How does black win? _____

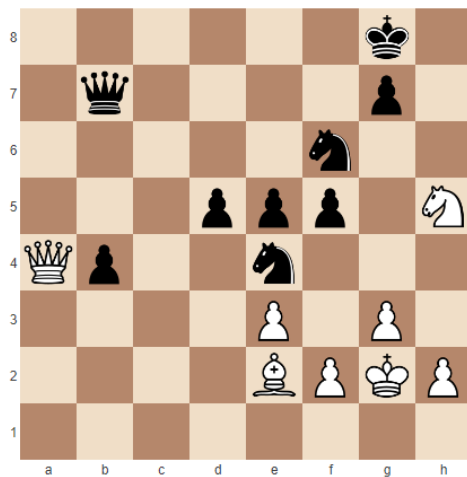
Black to move:



Can black save their rook? _____

What move should black play? _____

Black to move:

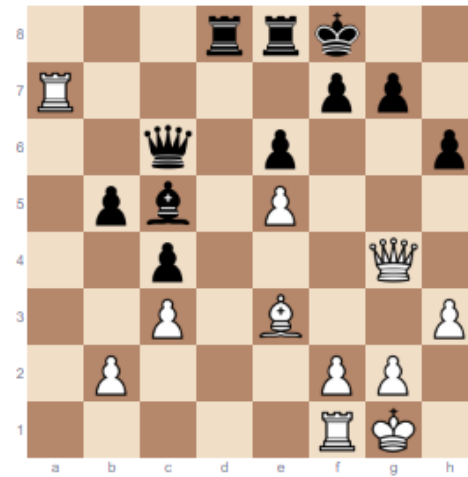


Black's plan is to trade knights

Should white recapture with Q or B?

Will White win, lose, or draw? _____

White to move:



white is being double-attacked by the B

how should white save both pieces?

Will White win, lose, or draw? _____